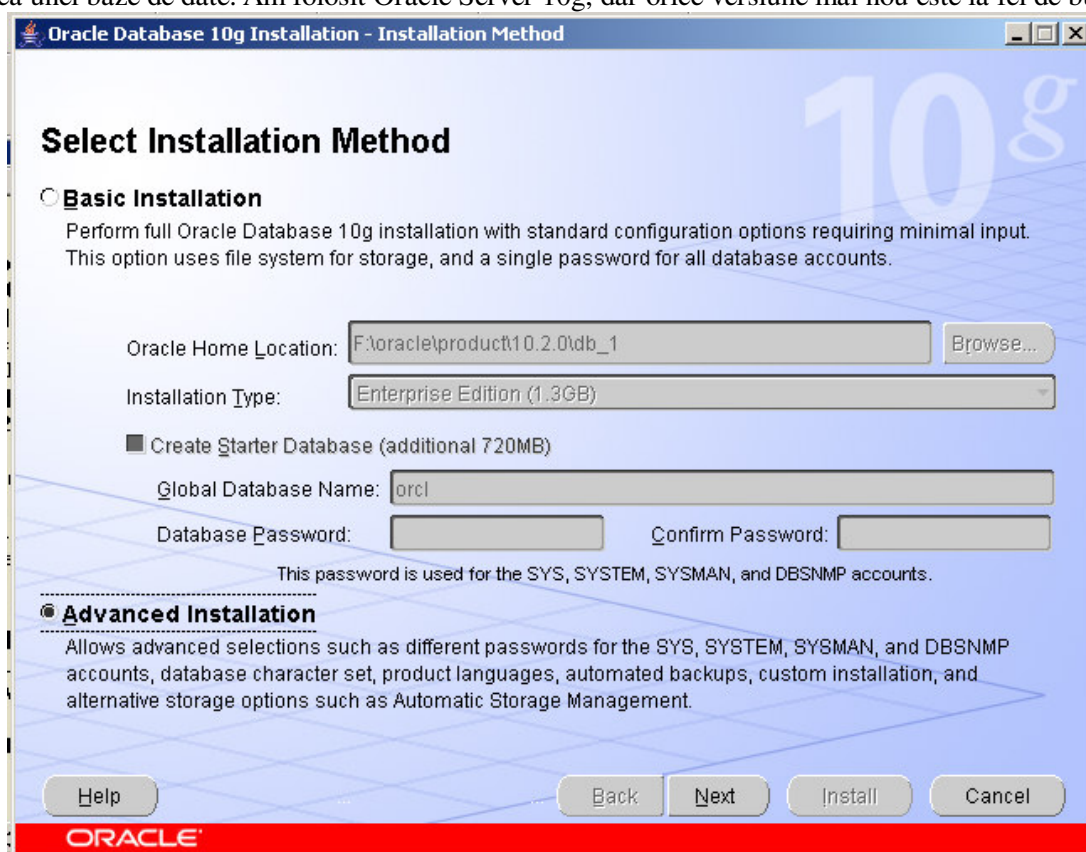


Instalare Server Oracle

Kitul de Oracle se ia de la www.oracle.com . Daca aveti nevoie de ajutor pentru aceasta procedura, puteti consulta "Tutorial Instalare Client Oracle". Pentru instalarea serverului ordinea sunt necesare setari aditionale si crearea unei baze de date. Am folosit Oracle Server 10g, dar orice versiune mai nou este la fel de buna.



Oracle Database 10g Installation - Installation Method

Select Installation Method

Basic Installation
Perform full Oracle Database 10g installation with standard configuration options requiring minimal input. This option uses file system for storage, and a single password for all database accounts.

Oracle Home Location:

Installation Type:

Create Starter Database (additional 720MB)

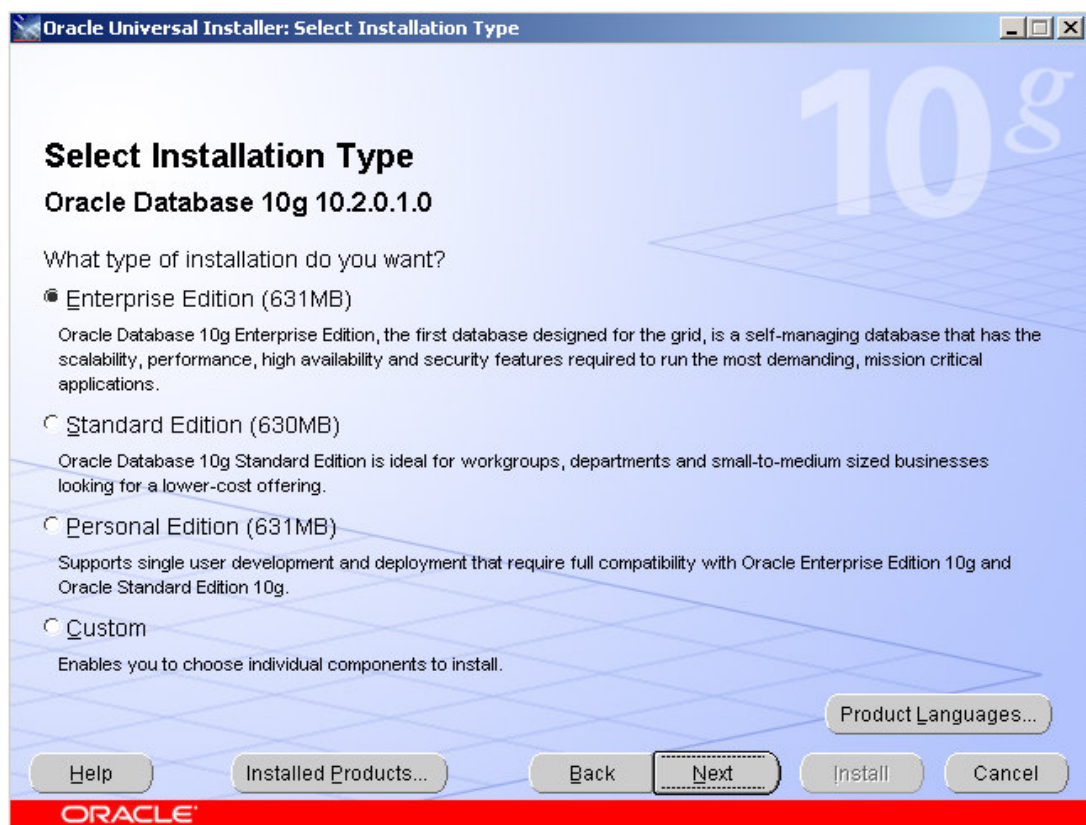
Global Database Name:

Database Password: Confirm Password:

This password is used for the SYS, SYSTEM, SYSMAN, and DBSNMP accounts.

Advanced Installation
Allows advanced selections such as different passwords for the SYS, SYSTEM, SYSMAN, and DBSNMP accounts, database character set, product languages, automated backups, custom installation, and alternative storage options such as Automatic Storage Management.

ORACLE



Oracle Universal Installer: Select Installation Type

Select Installation Type

Oracle Database 10g 10.2.0.1.0

What type of installation do you want?

Enterprise Edition (631MB)
Oracle Database 10g Enterprise Edition, the first database designed for the grid, is a self-managing database that has the scalability, performance, high availability and security features required to run the most demanding, mission critical applications.

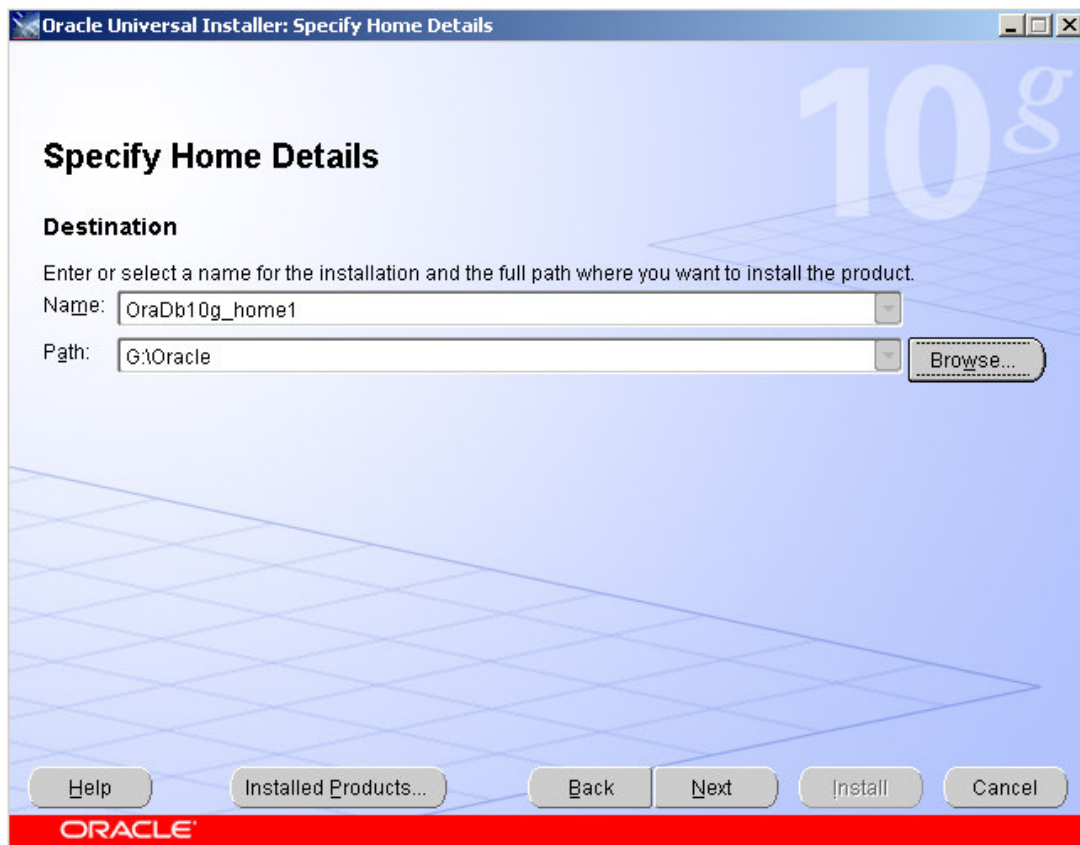
Standard Edition (630MB)
Oracle Database 10g Standard Edition is ideal for workgroups, departments and small-to-medium sized businesses looking for a lower-cost offering.

Personal Edition (631MB)
Supports single user development and deployment that require full compatibility with Oracle Enterprise Edition 10g and Oracle Standard Edition 10g.

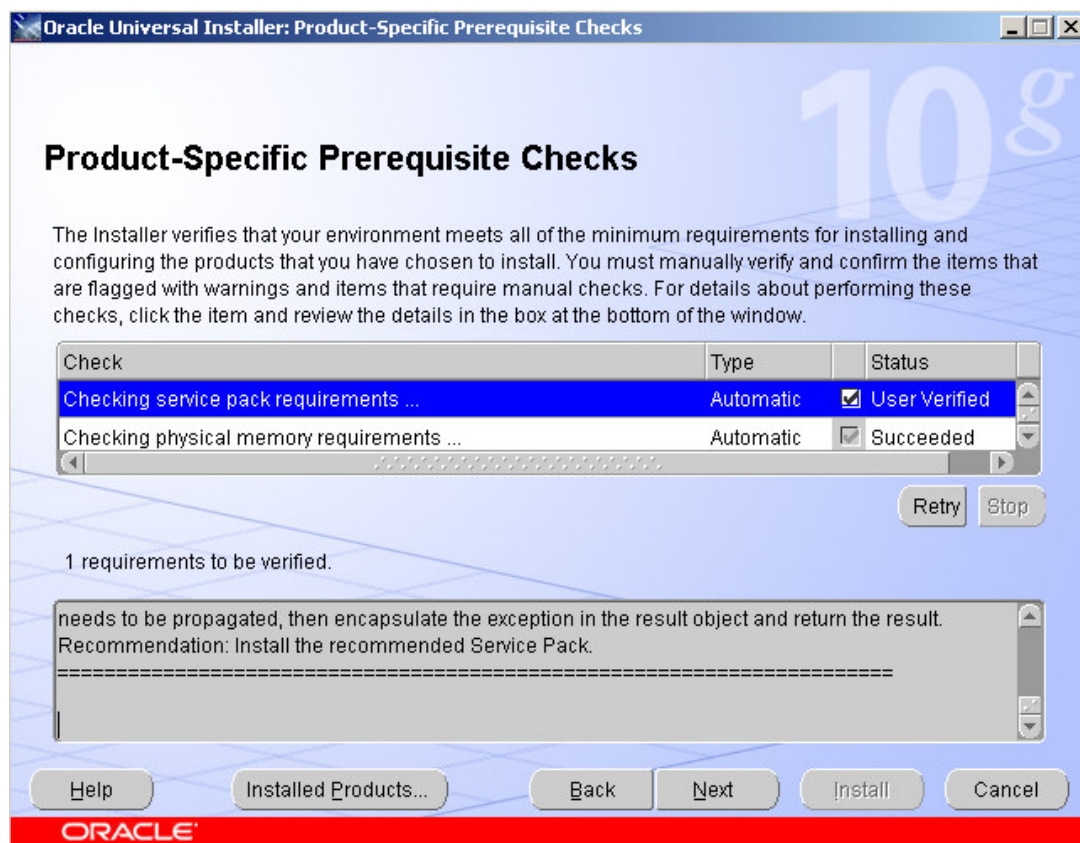
Custom
Enables you to choose individual components to install.

ORACLE

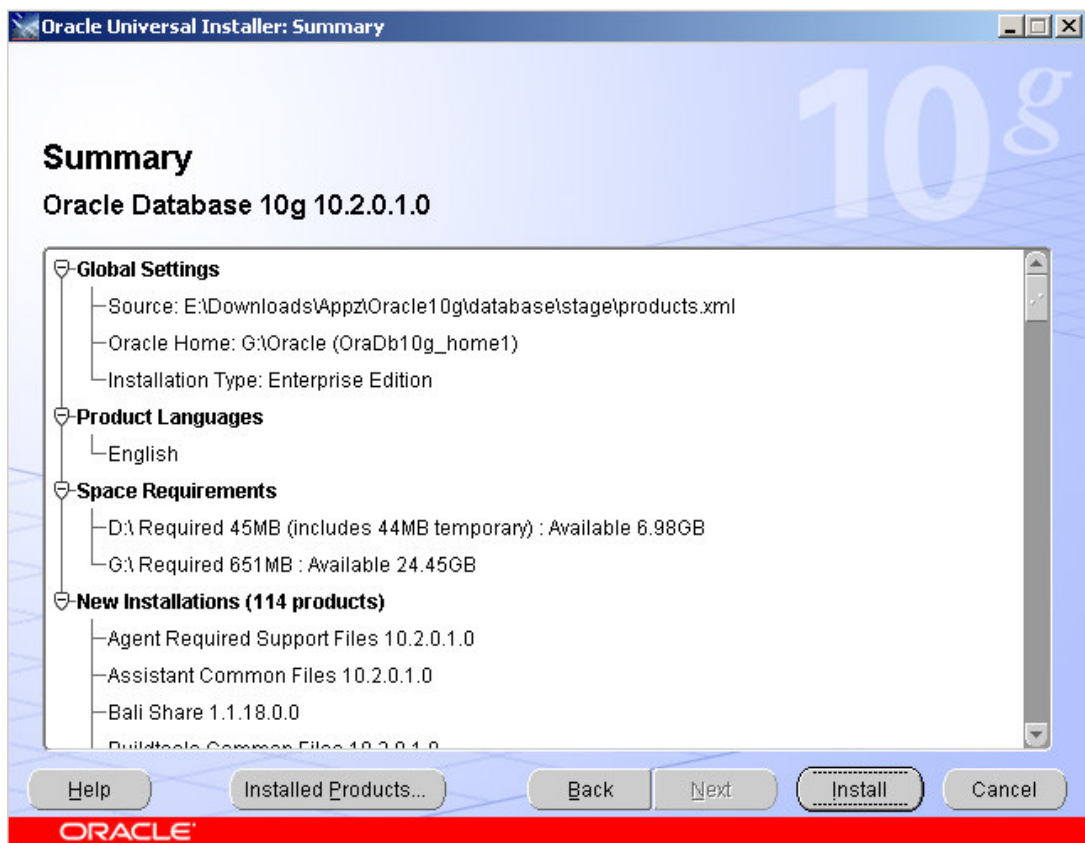
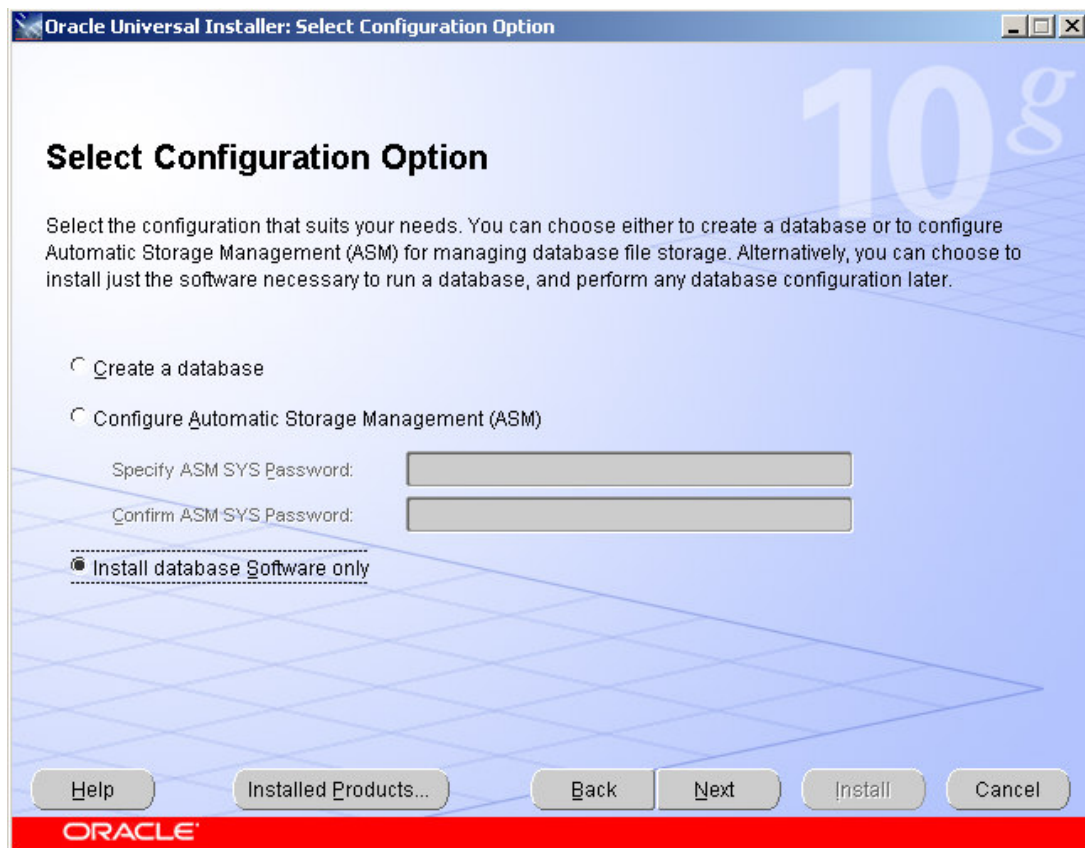
- Selectati numele instalarii si calea pe hard disk.

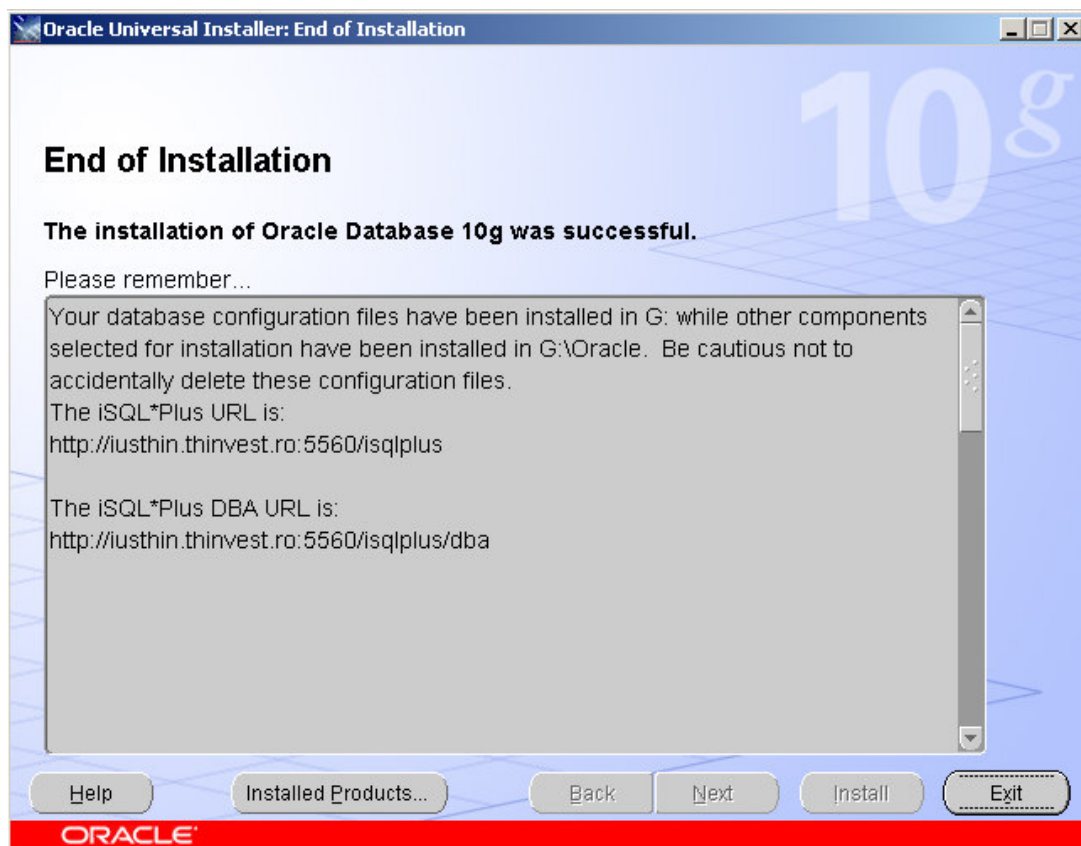
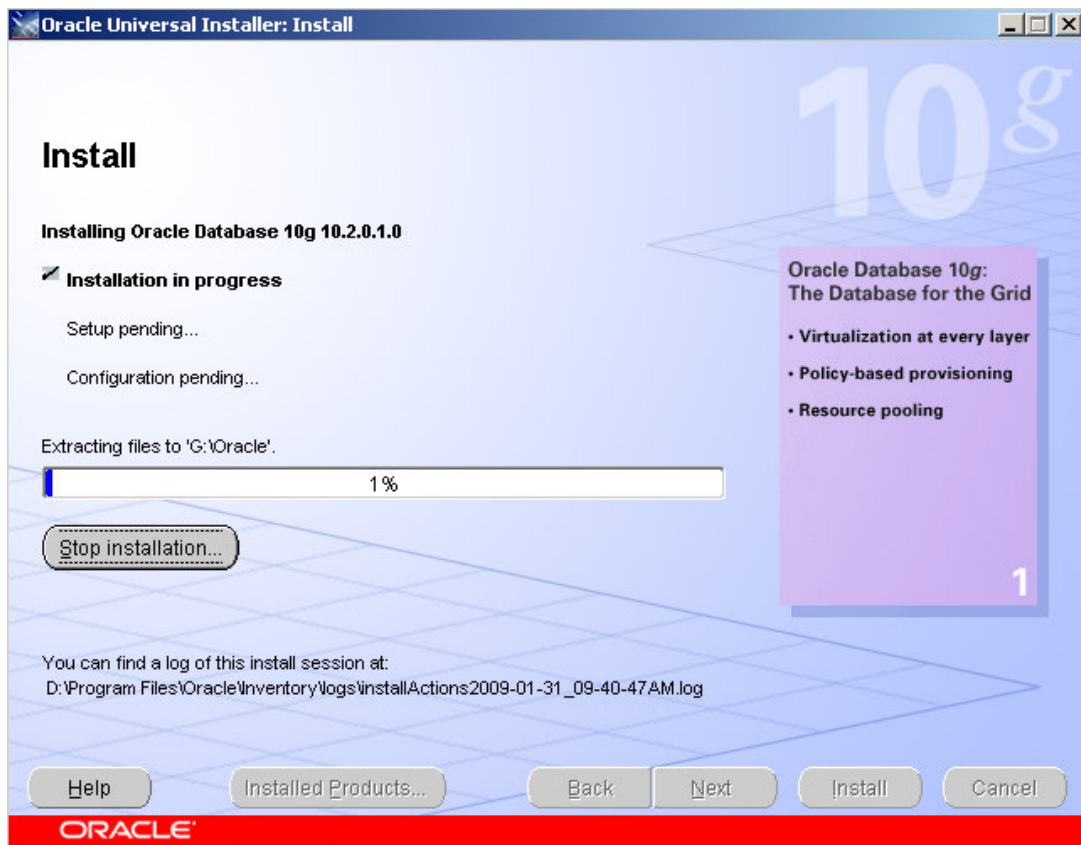


- Urmeaza verificari automate de compatibilitate. Este esential sa nu primiti erori in acest stadiu



- Crearea bazei de date nu este detaliata in acest tutorial. Selectati doar softul pentru baze de date





Odata ce instalarea s-a terminat cu succes puteti trece la pasul urmator pentru crearea bazei de date.